

Notices to Mariners, SWEDEN Swedish Maritime Administration



Areas in Swedish Notices to Mariners



SWEDISH MARITIME
ADMINISTRATION

NtM-Editorial office
Swedish Maritime Administration
601 78 Norrköping

Sweden
Tel: 0771 630 605
E-mail: ufs@sjofartsverket.se

Publisher:
Hydrographer Patrik Wiberg

ANNOUNCEMENTS

No Announcements in this booklet.

NOTICES

Areas without notices in this booklet

| |
|----------------------------------|
| Sea of Bothnia |
| Sea of Åland and Archipelago Sea |
| Gulf of Finland |
| Gulf of Riga |
| South-Eastern Baltic |
| South-Western Baltic |
| The Sound |
| The Belts |
| Kattegat |
| Skagerrak |
| Lake Vänern and Trollhätte Canal |
| Inshore waters |
| not area bound |

Bay of Bothnia

*** 19145 (T)**

Chart: 4, 41, 415, 421

Sweden. Bay of Bothnia. E of Byske. Tåme. Firing exercises. April 1 - 10, 2025.

Firing exercises will be carried out at Tåme firing range during times listed below. During these times the charted danger area "R 58" is closed for navigation within stated distance from shore.

Warninglight lit during firing.

Further information on VHF channel 16, call Tåme skjutfält, or phone +46 (0)921 348 405.

| Date | Time | Range from shore |
|--------------|------------------|------------------|
| April 1 - 4 | 0730 - 1830 (LT) | 9.5 M |
| April 5 | 0730 - 1730 (LT) | 9.5 M |
| April 6 | 0730 - 1730 (LT) | 1 M |
| April 7 - 10 | 0730 - 1830 (LT) | 9.5 M |

| | | | | |
|-------------------------|----|------------|-------------|---------------------------|
| Position: Approximately | a) | 64-55N | 021-30E | Tåme Firing practice area |
| Warninglight VQ Y 10M | b) | 64-58,155N | 021-20,165E | |

Not shown in ENC.

Bsp Bottenviken 2023/s37, s38, s39, s40, s41, s42, s44

Försvarmakten. Publ. 19 Mar 2025

*** 19155**

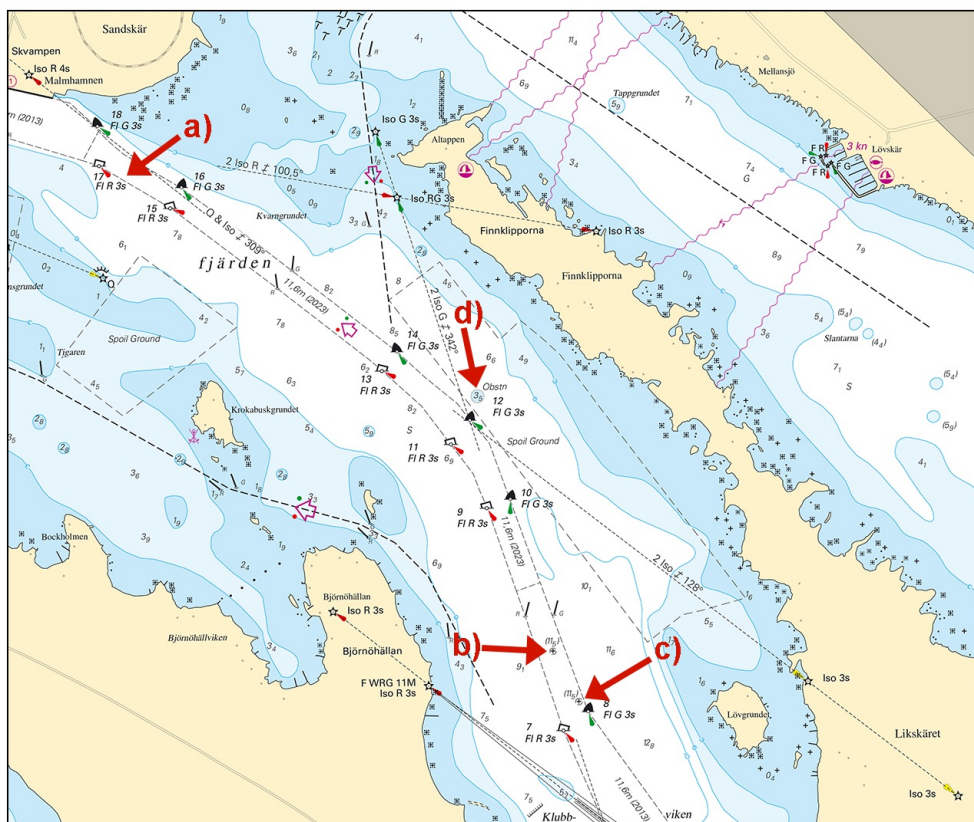
Chart: 4101, 414

Sweden. Bay of Bothnia. Luleå. Sandöfjärden. Finnklipporna. Klubbviken. Svartön. The quay "SSAB-kajen". Depths.

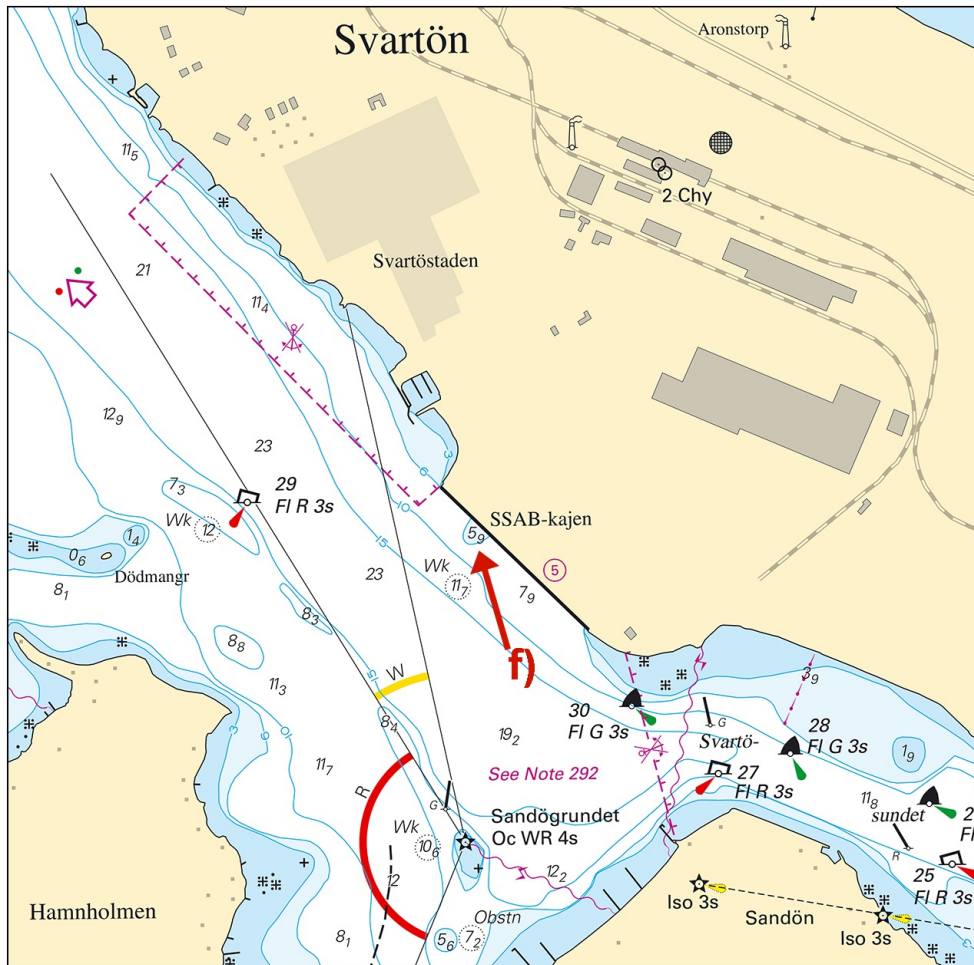
A hydrographic survey in Luleå has shown other depths than charted. Important amendments are presented in the table below, and will be published in the next print of the affected chart. The changes are available as an ENC update.

| | | | | | |
|---------------|---|----|------------|-------------|---------------|
| Delete | underwater rock of known depth 11,4 | a) | 65-32,471N | 022-17,831E | See chartlets |
| Insert | underwater rock of known depth 11,5 | b) | 65-31,266N | 022-20,354E | |
| Insert | underwater rock of known depth 11,5 | c) | 65-31,139N | 022-20,507E | |
| Insert | Obstruction, least depth known by sounding only "Obstn 3,5" | d) | 65-31,907N | 022-19,917E | |
| Delete | sounding 7,6 | e) | 65-33,399N | 022-11,812E | |
| Insert | sounding 5,9 | f) | 65-33,392N | 022-11,834E | |
| Insert | 6 meter depth contour, so that position f) is encircled | | | | |

Bsp Bottenviken 2023/s26, s58, s60, s61



Depth amendments in Sandöfjärden



New sounding and depth contour at the quay "SSAB-kajen"

Sjöfartsverket. Publ. 19 Mar 2025

The Quark

* 19153

Chart: 4, 42, 429, 5, 512

Sweden. The Quark. TSS and Two-Way Routes "In Norra Kvarken". Temporary withdrawal completed.

Expired notices: [2025:1055/19087\(T\)](#)

Time: From March 24, 0000 UTC, 2025.

The TSS and Two-Way Routes "In Norra Kvarken" which were temporarily suspended due to winter conditions will come into force again at the time specified above.

| | | | |
|-------------------|----|----------|-----------|
| Southern entrance | a) | 63-25,3N | 020-34,8E |
| Northern entrance | b) | 63-35,1N | 021-03,7E |

Bsp Bottenhavet N 2024/s07, s34, s35

Transportstyrelsen. Publ. 19 Mar 2025

Northern Baltic

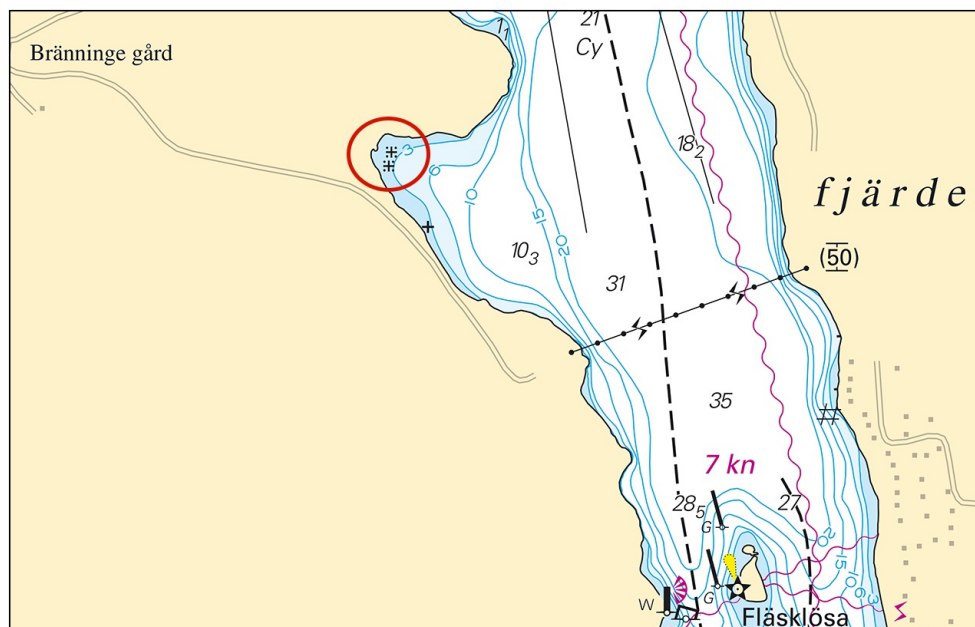
* 19154

Chart: 6181

Sweden. Northern Baltic. S of Södertälje. Hallsfjärden. Bränninge gård. Rocks awash.

| | | | | | |
|--------|------------|----|------------|-------------|--------------|
| Delete | rock awash | a) | 59-08,161N | 017-40,181E | See chartlet |
| Insert | rock awash | b) | 59-08,151N | 017-40,205E | |
| Insert | rock awash | c) | 59-08,170N | 017-40,210E | |

Bsp Mälaren - Hjälmarén 2024/s32



Area with amendments in Hallsfjärden

Sjöfartsverket. Publ. 19 Mar 2025

Lake Mälaren and Södertälje Canal

* 19107 (T)

Chart: 6141

Sweden. Lake Mälaren and Södertälje Canal. Mälaren. Stockholm. Bridge 'Gröndalsbron'. Works.

Period: April 1 - July 31

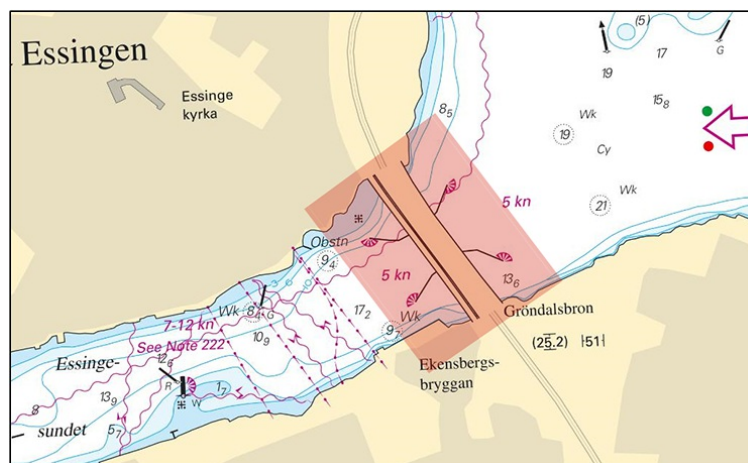
An area 75 meters west of, and 75 meters east of bridge 'Gröndalsbron' is closed for traffic Monday night (from 2200 LT), going on Tuesday morning (to 0500 LT), and Thursday night from (2200 LT), going on Friday morning (to 0500 LT) every week during the above stated period.

Work will be conducted from a barge equipped with AIS.

Contact: VTS Södertälje, VHF channel 68.

| | | |
|-----------------------|----------|-----------|
| Bridge 'Gröndalsbron' | 59-19,1N | 017-59,9E |
|-----------------------|----------|-----------|

Bsp Mälaren - Hjälmarén 2024/s50



Closed area.

* 19122 (T)

Chart: 111

Sweden. Lake Mälaren and Södertälje Canal. Stockholm. Mälaren. Kärösön. The bridge "Nockebybron". Partially closed fairway.

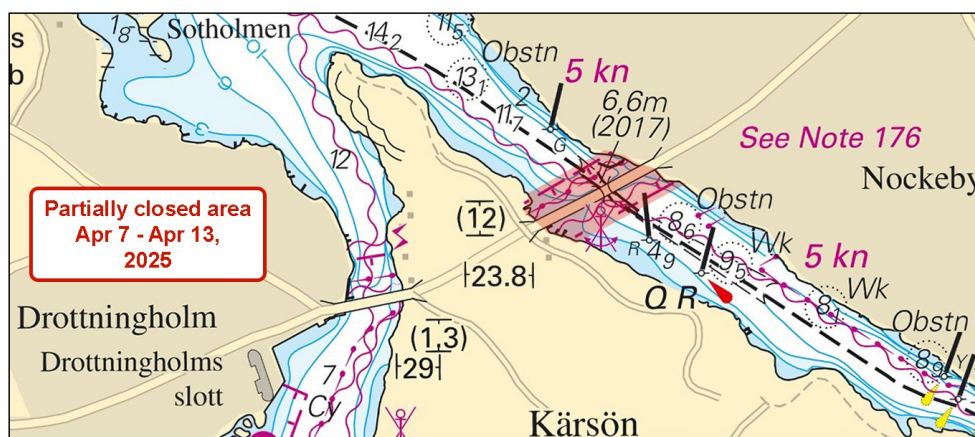
Period: April 7, 0600 LT - April 13, 2400 LT, 2025.

During the period stated above, the fairway that passes under the bridge "Nockebybron" is closed for maritime traffic that require a bridge opening when passing. The extent of the area is shown in the table below.

Maritime traffic that does not require a bridge opening for passage of the bridge "Nockebybron" will not be affected by this partial closing.

| | | | | |
|---|----|------------|-------------|--------------|
| Partially closed area, position a) - d) | a) | 59-19,751N | 017-54,624E | See chartlet |
| | b) | 59-19,669N | 017-54,828E | |
| | c) | 59-19,544N | 017-54,418E | |
| | d) | 59-19,624N | 017-54,164E | |

Bsp Mälaren - Hjälmarén 2024/s49



Closed area at the bridge "Nockebybron"

Central Baltic

*** 19143 (T)**

Chart: 62, 71, 731

Sweden. Central Baltic. Gotland. SW of Visby. Tofta. Firing exercises. March 24 - 29, 2025.

Firing exercises will be carried out within Tofta firing range (R28) during stated times.

The area is monitored. Firing will be discontinued when vessels pass through the area.

Signal ammunition is used during the period March 28 - 29.

Further information during firing: tel. +46 (0)10 829 57 17.

| | | |
|--------------------|--------|---------|
| Tofta firing range | 57-35N | 018-00E |
|--------------------|--------|---------|

| Date | Time | Range from shore |
|------|------|------------------|
|------|------|------------------|

| | | |
|---------------|----------------|-------|
| March 24 - 27 | 0800 - 1600 LT | 7.5 M |
| March 28 | 0900 - 2000 LT | 7.5 M |
| March 29 | 0800 - 1500 LT | 7.5 M |

Not shown in ENC.

Bsp Kalmarsund 2023/s07, Bsp Ostkusten 2023/s07, Bsp Ostkusten 2025/s07

Försvarsmakten. Publ. 19 Mar 2025

*** 19148**

Chart: 624, 71, 711, 731

Sweden. Central Baltic. Flivik. Klintehamn. Mönsterås. Slite. Kappelshamn. Fårösund. Reporting points. Reiteration.

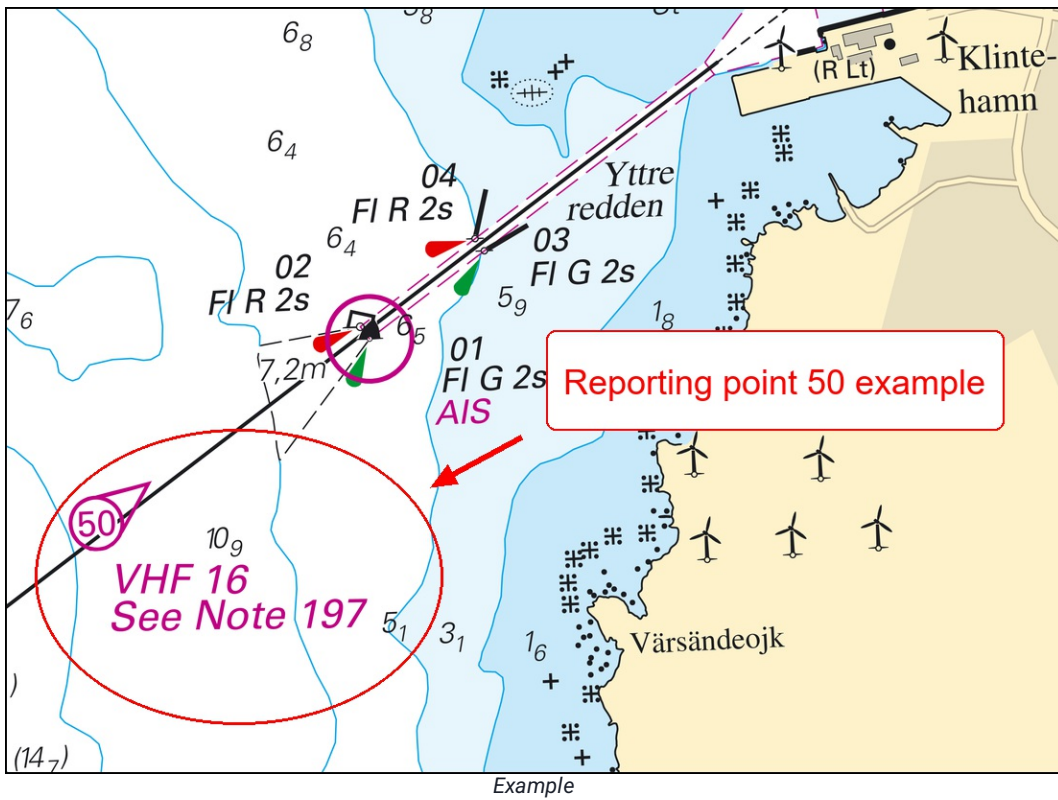
See: [2025:1057/19099](#)

Many new reporting points have been added. Note 197 needs to be added to chart 731.

Note: This notice is a reiteration of notice 19099 which is not mentioned on Chart edition / corrections on <https://ufs.sjofartsverket.se/current/products>

| | | | |
|---------------|--|----------|-----------|
| Insert | radio reporting point 55 inbound and text "VHF 16 See Note 197" | 57-30,2N | 016-50,4E |
| Insert | radio reporting point 50 inbound and text "VHF 16 See Note 197" | 57-22,4N | 018-08,5E |
| Insert | radio reporting point 33 inbound and text "VHF 16 See Note 197" | 57-10,6N | 016-36,5E |
| Insert | radio reporting point 54 inbound and text "VHF 16 See Note 197" | 57-40,2N | 018-50,4E |
| Insert | radio reporting point 52 inbound and text "VHF 16 See Note 197" | 57-52,2N | 018-47,6E |
| Insert | radio reporting point 53 NW bound and text "VHF 16 See Note 197" | 57-48,8N | 019-06,8E |

Bsp Kalmarsund 2023/s10, s13, s17



Note 197**GENERAL CALL**

Vessels of 300 GT or more and vessels, including tows, with a length of 45 meters or more should make a general call in English on VHF Ch 16 when passing the reporting point and when departing from a quay or anchorage.

Following information should be stated:

- A. "All ships" call and VHF Ch
- B. Ship type and ship's name
- C. Name and location of reporting point or place of departure
- D. Intended route
- E. Destination

Smaller vessels fitted with a VHF should report if the circumstances so admit.

ALLMÄNT ANROP

Fartyg med en bruttodräktighet om 300 eller mer eller fartyg, även bogserande med släp, med en längd av 45 meter eller mer bör göra ett allmänt anrop på VHF kanal 16 vid passage av rapporteringspunkten och vid avgång från kaj eller ankarplats i området innanför rapporteringspunkten. Anropet ska ske på engelska.

Följande uppgifter bör lämnas:

- A. Allmänt anrop och VHF kanal
- B. Fartygstyp och fartygsnamn
- C. Namn och läge på rapporteringspunkt eller avgångsplats
- D. Avsedd färdväg
- E. Destination

Befälhavare på övriga fartyg utrustade med VHF bör göra allmänt anrop om omständigheterna gör det lämpligt.

Note 197

Transportstyrelsen. Publ. 19 Mar 2025

Southern Baltic

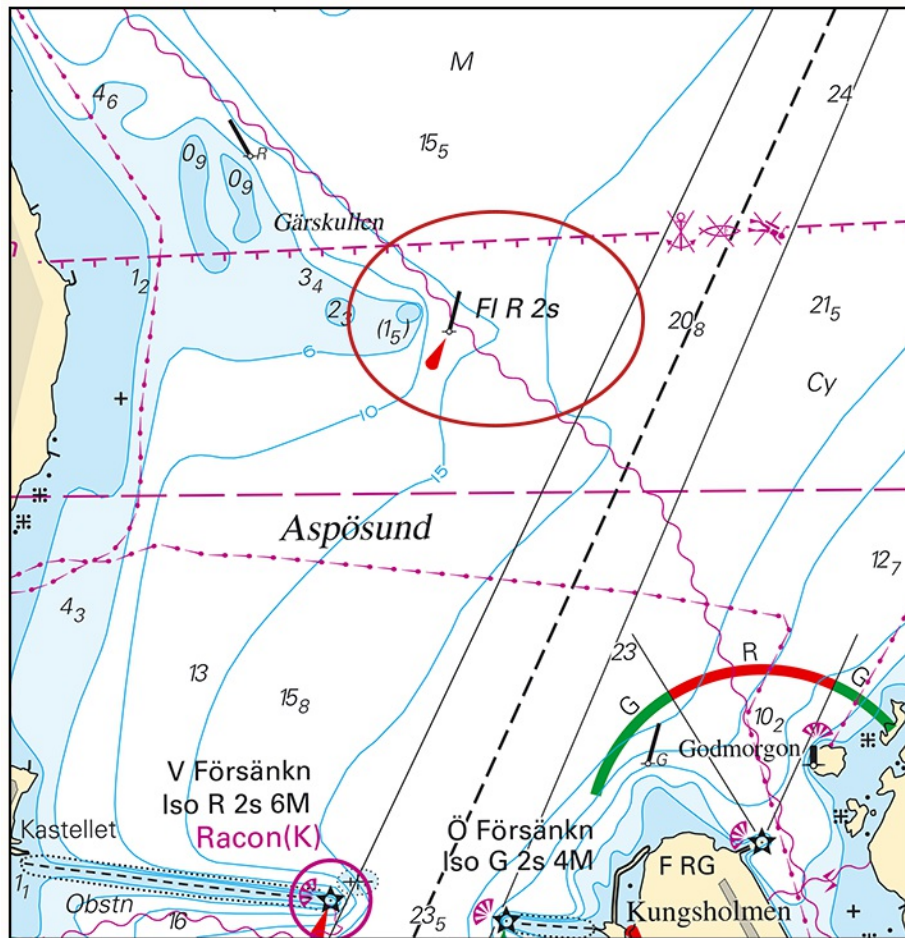
* 19116

Chart: 741, 7411

Sweden. Southern Baltic. S of Karlskrona. Aspösund. Gärskullen. Buoyage.

| | | | | |
|----------------|--------------------------|---|------------|-------------|
| Replace | port hand spar buoy with | port hand light spar buoy FI R 2s with no topmark | 56-07,143N | 015-34,780E |
|----------------|--------------------------|---|------------|-------------|

Bsp Hanöbukten 2022/s16, s41



Port hand spar buoy replaced by light spar buoy. S of Karlskrona

Sjöfartsverket. Publ. 19 Mar 2025